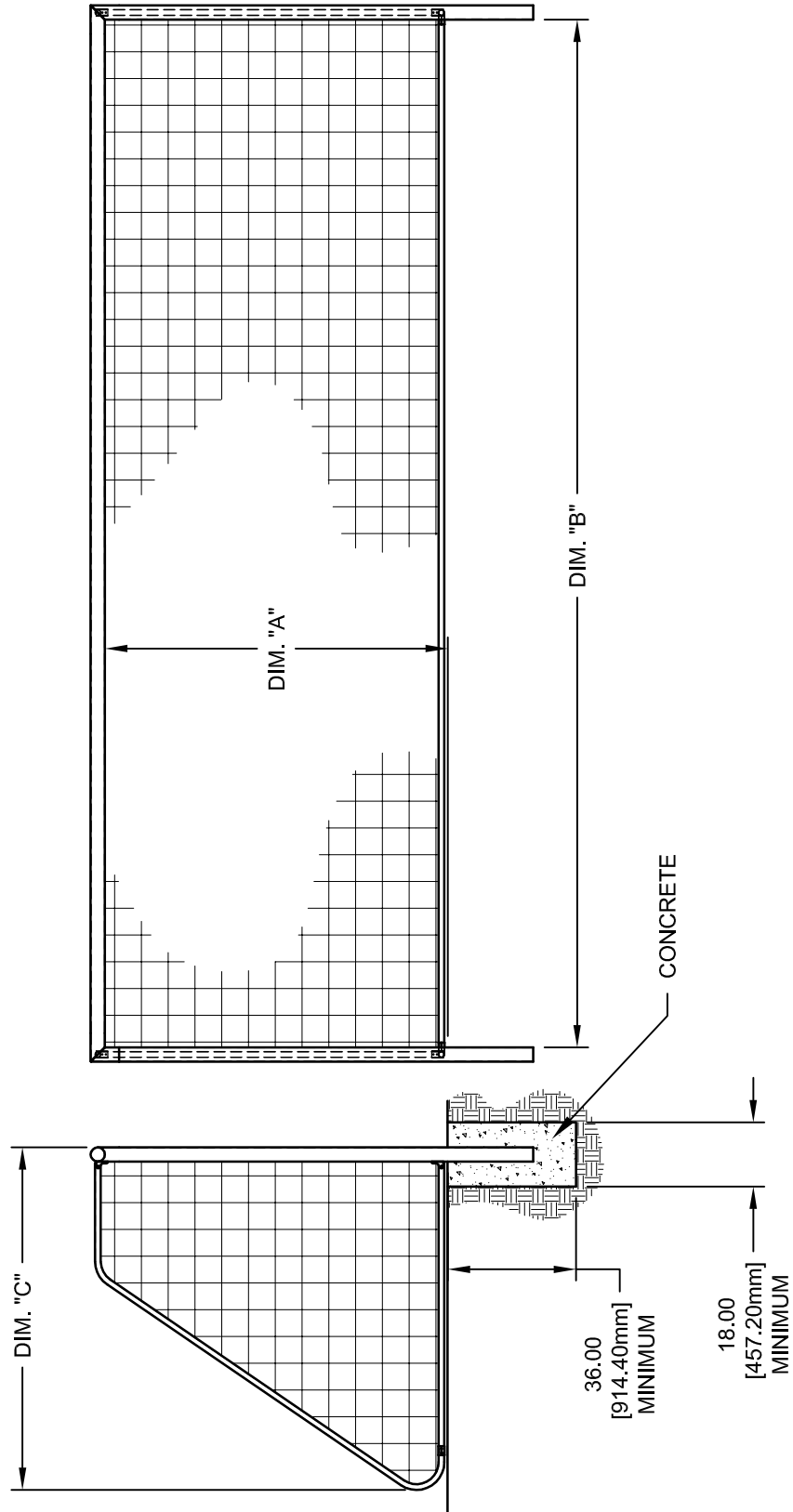


4.0" [101.6 mm] ROUND EXTRUDED ALUMINUM FRAME.
1-5/8" [41.28 mm] O.D. GALVANIZED STEEL BACKSTAY.
PLATED CONNECTION HARDWARE.

SG32 SERIES SOCCER GOAL				
MODEL	DIM. "A" Ft.-In. (Meters)	DIM. "B" Ft.-In. (Meters)	DIM. "C" Ft.-In. (Meters)	
SG32824	8'-0" (2.44M)	24'-0" (7.32M)	8'-2" (2.49M)	
SG32721	7'-0" (2.13M)	21'-0" (6.40M)	7'-1" (2.16M)	
SG32618	6'-6" (1.83M)	18'-0" (5.49M)	6'-1" (1.85M)	

NET SHOWN IS OPTIONAL AND MUST BE SPECIFIED SEPARATELY.
"J" STAKE BACKSTAY ANCHORS SUPPLIED AS STANDARD. UNDERGROUND ANCHORS
AVAILABLE AS AN OPTION AND AT ADDITIONAL COST.
NEVER CLIMB OR HANG ON THE NET OR GOAL FRAMEWORK.



REVISION		
REV.	DATE	BY
A	06/02/08	JJC
B	01/25/11	JJC



Gared Holdings, LLC
9200 E. 146th St. Noblesville, IN 46060

THIS DOCUMENT CONTAINS TRADE SECRET AND OTHER MATERIALS WHICH ARE
PROTECTED BY CONFIDENTIALITY NOTICE AND AGREEMENT AND BY COPYRIGHT. ANY
USE OR COPYING OF THIS DOCUMENT EXCEPT AS AUTHORIZED BY GARED HOLDINGS,
LLC IS STRICTLY PROHIBITED.

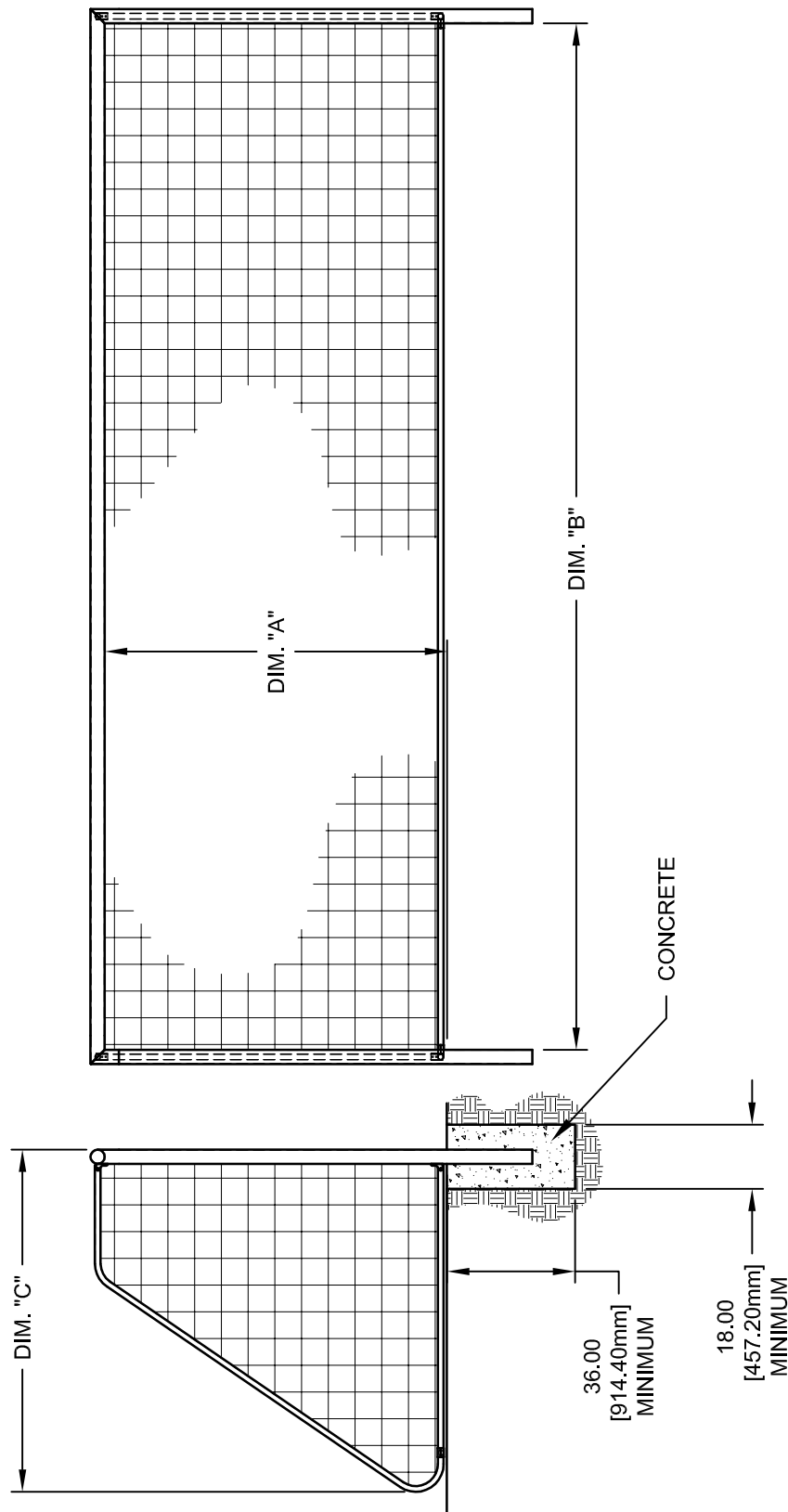
4" ROUND FRAME PERMANENT SOCCER GOAL

DRAWN	CONNERLEY	DATE	12/17/07	MATERIAL	N/A
APPROVED	JJC	DATE	12/15/07	FINISH	N/A
FILE LOC. Q:\Final Release\Specifications				DWG. NO.	SG32
SIZE	SCALE	SHT. NO.	PART NO.	SG32 SERIES	
A	NOTED	1 OF 1			
					REV B

4.0" [101.6 mm] ROUND EXTRUDED ALUMINUM FRAME.
1-5/8" [41.28 mm] O.D. GALVANIZED STEEL BACKSTAY.
PLATED CONNECTION HARDWARE.

SG32 SERIES SOCCER GOAL				
MODEL	DIM. "A" Ft.-In. (Meters)	DIM. "B" Ft.-In. (Meters)	DIM. "C" Ft.-In. (Meters)	
SG32824	8'-0" (2.44M)	24'-0" (7.32M)	8'-2" (2.49M)	
SG32721	7'-0" (2.13M)	21'-0" (6.40M)	7'-1" (2.16M)	
SG32618	6'-6" (1.83M)	18'-0" (5.49M)	6'-1" (1.85M)	

NET SHOWN IS OPTIONAL AND MUST BE SPECIFIED SEPARATELY.
"J" STAKE BACKSTAY ANCHORS SUPPLIED AS STANDARD. UNDERGROUND ANCHORS
AVAILABLE AS AN OPTION AND AT ADDITIONAL COST.
NEVER CLIMB OR HANG ON THE NET OR GOAL FRAMEWORK.



REVISION		
REV.	DATE	BY
A	06/02/08	JJC
B	01/25/11	JJC



Gared Holdings, LLC
9200 E. 146th St. Noblesville, IN 46060

THIS DOCUMENT CONTAINS TRADE SECRET AND OTHER MATERIALS WHICH ARE
PROTECTED BY CONFIDENTIALITY NOTICE AND AGREEMENT AND BY COPYRIGHT. ANY
USE OR COPYING OF THIS DOCUMENT EXCEPT AS AUTHORIZED BY GARED HOLDINGS,
LLC IS STRICTLY PROHIBITED.

4" ROUND FRAME PERMANENT SOCCER GOAL

DRAWN	CONNERLEY	DATE	12/17/07	MATERIAL	N/A
APPROVED	JJC	DATE	12/15/07	FINISH	N/A
FILE LOC. Q:\Final Release\Specifications				DWG. NO.	SG32
SIZE	SCALE	SHT. NO.	PART NO.	SG32 SERIES	
A	NOTED	1 OF 1			
					REV B



MODEL SG32

PERMANENT SOCCER GOAL

This unit is designed for multi-use fields. Upright posts and cross bar are constructed of 4" round extruded aluminum tubing. Backstays and rear stabilizing bar constructed of 1 5/8" O.D. heavy wall galvanized steel tubing. Available in 3 goal sizes (see below for goal size). Standard finish is white powder coat on main goal frame. Optional finish is natural (unpainted).

Unit shall be designed for permanent installation. Upright posts are to be installed with a concrete footing approximately 18" in diameter and 36" deep. Post shall extend approximately 24" into concrete footing.

Sold in pairs.

SG32824 - Size is 8' high x 24' wide x 8' deep

SG32721 - Size is 7' high x 21' wide x 7' deep

SG32618 - Size is 6'-6" high x 18' wide x 6' deep

Meets NCAA, NFSHSA and FIFA specifications.

Goal includes "J" stakes and net clips. Net not included.

Optional Equipment:

SGWK	Wheel adapter kit
SGUA	Soccer Goal Underground Anchoring System

Nets

SN824-4W	Braided 4mm white soccer net, 8'H x 24'W
SN824-4O	Braided 4mm orange soccer net, 8'H x 24'W
SN824-3W	Braided 3mm white soccer net, 8'H x 24'W
SN721-3W	Braided 3mm white soccer net, 7'H x 21'W
SN721-3O	Braided 3mm orange soccer net, 7'H x 21'W
SN618-2W	Braided 2mm white soccer net, 6'H x 18'W
SN618-2O	Braided 2mm orange soccer net, 6'H x 18'W