

3-Way and 4-Way Directional Brackets



Tools Required: Hammer or mallet, Phillips screwdriver or screw gun.

Installing Your Frame: Getting started: Design the shape, height and area of your garden, sandbox or play area. Measure your site and make sure you will have ample space for your design. Level the soil where the timbers will be placed to keep them level after installation. NOTE: Raised garden beds can be installed directly on existing grass. To prevent grass from growing through, place landscape fabric over the grass before filling the bed with soil.

Preparing for installation: Slide your timbers into the channel end of one of the brackets until it is centered and flush on all sides. Use the supplied screws to fasten the sideboards to the bracket. For a 3-way direction, use one 4-way bracket and one regular bracket. (See Images 4 & 5). For a 4-way direction, use two 4-way brackets (See Images 1 & 2). Repeat this process on the opposite end of the bed. Continue this process until all of your timbers are fully bracketed on both ends. Layout base level of design with stake fins facing up. Any adjustments to your design should now be done if needed. Once desired position of base level is achieved, turn each stake over with fins facing down and hammer stakes into ground.



4-Way Direction is used when you're making a 90 degree turn with your raised garden. It is created with two 4-Way brackets

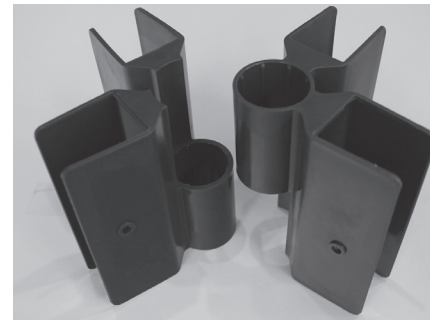


Image 1 - 4-way bracket

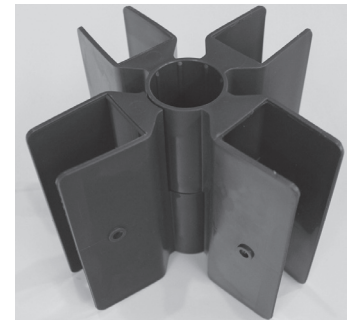


Image 2

See Important Note on Page 2

3-Way and 4-Way Directional Brackets

Stacking Additional Levels: If a multi level design is desired, slide a second stake of each Stacking Joint into each of the exposed tops of the in-ground level stakes. Slide your timber into the channel end of one of the brackets until it is centered and flush on all sides. Use the supplied screws to fasten the timber to the bracket. Locate the second level of timbers in place until the second level is complete. Repeat this process to add additional levels until you reach your desired height.

Finish: To finish the appearance of each Joint and to secure the brackets over the stake, push or tap the supplied caps into the tops of the stakes until they snap in place. If the edging is open ended and the Finishing Sleeves are required simply replace one of the winged brackets on the last stake where the border needs to come to an end, giving it a cleaner more aesthetically pleasing appearance.

IMPORTANT NOTE: – with this stake and stake design, its not necessary to use the 3&4 way directional Brackets (3 & 4-way) on every level of your raised garden design. When building a two level raised garden, use the 3 & 4-way bracket on the 2nd level only. For a three level raised garden, use the 3 & 4-way brackets on the 2nd & 3rd level. For a four level raised garden use the 3 & 4-way directional brackets on the 2nd & 4th level of the raised garden, and so on with additional levels. For levels not using the 3 & 4-way brackets, use our regular brackets.



Image 2
3 Way Direction is used when tying one side into the other side of your raised garden. It is created with one 4 way bracket and one regular bracket



Image 4 - 3-way bracket



Image 5

